

Hyena Pan

ELEPHANT SONG TRAIL

An Extraordinary

WALKING SAFARI



Hyena Pan

ELEPHANT SONG TRAIL

Elephant Song Trail

AN EXTRAORDINARY WALKING SAFARI

This is no ordinary bush walk. This trail walk is to track some of the oldest bull elephant in this area; to get up close and experience a day in the lives of one of these magnificent creatures. From your guides you will learn just what it is that makes the biggest land mammal, the most revered on the planet. The elephant's brain capacity is far larger than any other extinct or living terrestrial animal and the knowledge he carries is extraordinary. His communication skills to others of his species make this a unique animal and to hear his song up close is a wonder of the natural world. The various sounds they make can travel up to 10 km. They use seismic communication and who knows what else. You will track these animals with Bayei Bushman from the Khwai Village. They are known as the River Bushman who arrived in Botswana over 100 years ago and settled along the Khwai River. Originally their village was at Dombo Hippo pools inside the now Moremi National Park. After the declaration of the park boundaries and the land having been given by the Kgosi, Chief Moremi, the people of the Dombo village moved to the site where the Khwai village now exists. The men of this village were hunter gatherers and their skills in the art of tracking exist today. Their knowledge and the fascination of the tracking techniques are unfathomable.

These old beasts from a time gone by rely on us humans for their safety. As big and as proud as they are, their dependence unbeknown to them, keeping them safe falls on us all. During this journey we will share our knowledge and ideas together. You will learn the history of the ivory trade back in the 18th century to how this precious commodity caused wars and changed the shape of Africa. No other species in Africa has and will ever achieve this. Today their existence hangs in the balance. Over 70% of the world's elephant population has been lost. Elephants that once roamed in their thousands in the countries to the North of Botswana now no longer exist and their song will never be heard over the great jungles and plains they once roamed. Botswana has one of the last and greatest populations left of this magnificent animal. They have an incredible amount of space to roam in and one of their favourite places is the Khwai concession. This unique and exclusive area is where you come to be passionate about these animals and to learn what they are all about, more importantly, to understand your options to help them survive the future. With knowledge comes understanding and with understanding comes action and with action comes true conservation. Elephant song is a trail that we invite you to join, we want to share our passion with you we want you to meet these old men at ground level, in their world. It's one wonderful truly unique world.

Brief Overview

ELEPHANT SONG TRAILS ADVENTURE

The tracking of elephants is an unknown and the distance they travel varies every day. We, as experienced guides and trackers, are very accomplished at telling how fresh the tracks are. Depending on the fitness level of the slowest member of the group we will judge the walks. A minimum walk is 7km over the course of the day. Usually an 8am start to the end of the day at around 2.30pm to 3.30pm.

You end the day at "The Platforms". These are three elevated semi thatched hides with a shower and loo under each hide, incorporating a private changing area. The hides overlook the water hole, 70 meters from the edge of the water. Numerous game frequents the water hole, elephant, buffalo, roan, kudu, giraffe to name a few. Sundowners, crisp gin and tonic or simply something light and fresh are served around the camp fire as dinner, served by our chef and friendly waiter under the stars by a camp fire. Sleep under the stars & mosquito net, on top of one of the platforms.

www.hyenapan.com

Hyena Pan
TENTED CAMP

RESERVATIONS:

E: kelly@hyenapan.com
T: +267 71656455

MARKETING:

E: marketing@hyenapan.com
T: +27 82 9257486
Skype: [nadine9896](https://www.skype.com/user/nadine9896)

Hyena Pan

ELEPHANT SONG TRAIL

5 Day / 4 nights - Elephant Song Trail Itinerary

DAY 1

Pick up from the Khwai airstrip with a 40 minute drive to Hyena Pan Tented Camp. On arrival you will be served a scrumptious light lunch, & shown to your tent for a little afternoon nap. High tea is served at 16:00 and the option to go on an afternoon game drive along the Khwai River or to the underground hide at one of our waterholes frequented by game, a photographer's paradise for that unusual shot.



If your charter flight into camp is delayed for any reason and you miss the afternoon activity, not to worry Hyena Pan Tented Camp waterhole only 50 meters from the lounges, and sun deck always has some action around it and many clients relax on the deck watching the game come in to drink.

After the afternoon activity, it's back for a shower. You will gather at the reception deck for de-brief on the next day's activity. Introductions to our very experienced guides leading your trail safari will be made. Your guide will go through the procedure for the upcoming days. Hyena pan will provide you with your own 3 litre water carrier which will have pockets to take cameras, snack/energy bars and food for the lunch break along the way. Your guide will recommend that you fill up with at least 3 litres of water. You may mix the water with juice or energy drinks. These will be laid on a table in the morning. You will be assisted with recommended food requirements for the day. Laid out on the table the next morning will be chocolate bars, energy bars, nuts, dried fruits, fresh fruit, biltong (great energy) dried sausages. Also laid on the table will be loaves of freshly baked camp bread and a selection of sandwich fillings. It will be recommended that you make yourself a sturdy sandwich that will be wrapped in a container to take with you. This will be your lunch time meal stop.

A briefing on safety will take place that evening, we will re-cap in the morning before the walk commences. The guide has a satellite phone with him at all times that has the emergency numbers of the office taped to the back should it ever be needed. He will carry a radio that links up to a central radio station in camp. Two radios will be carried, one by the tracker and one by the guide. GPS devices will also be part of the equipment on stand-by. You will have instruction on all equipment.

Things to carry will be a hat, sunscreen, lip salve and your cameras, a lens of 28 to 200 is ideal (you really do not need a big lens on this part of the journey). Most of all take a sense of adventure with you.

It will be explained to you that on the morning of your departure walk from hyena Pan you must have packed your travel bag and have left it outside your tent. From there it will be picked up by the Hyena Pan team and taken to the elevated platform where you will be spending the night.

DAY 2

Early morning rise. A full English breakfast at Hyena Pan dining area, hot steaming coffee or tea sizzling bacon, fruits and yogurts, cereal and eggs to order. After breakfast you will pick your energy bars, fruits and make a sturdy sandwich. Pack water into your pack and check you have your hat, sunscreen etc. The guide will be advising you all the way and will have you sorted out and ready for your adventure. Last minute, safety de-brief and you are ready to take your first step into the elephant world.

The walk is at the slowest persons pace. The tracker will be out in front. You will come across birds and have an informative guide to point out flora & fauna, but you will be working towards looking for that big old bulls track. A track that has seen thousands of kilometres walked, swum countless streams from one country to another, fathered numerous offspring, fought many a battle, avoided poachers in his life, run through fires, and now you get to meet him on his own turf.

www.hyenapan.com

Hyena Pan
TENTED CAMP

RESERVATIONS:

E: kelly@hyenapan.com
T: +267 71656455

MARKETING:

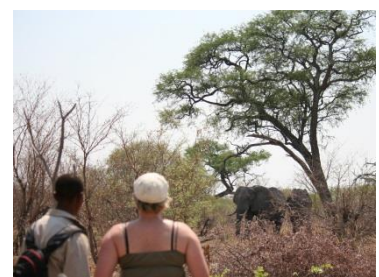
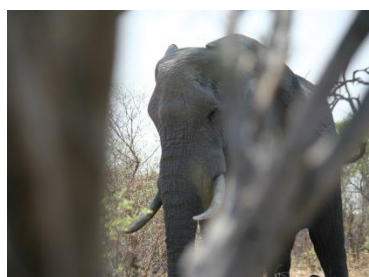
E: marketing@hyenapan.com
T: +27 82 9257486
Skype: [nadine9896](https://www.skype.com/user/nadine9896)

Hyena Pan

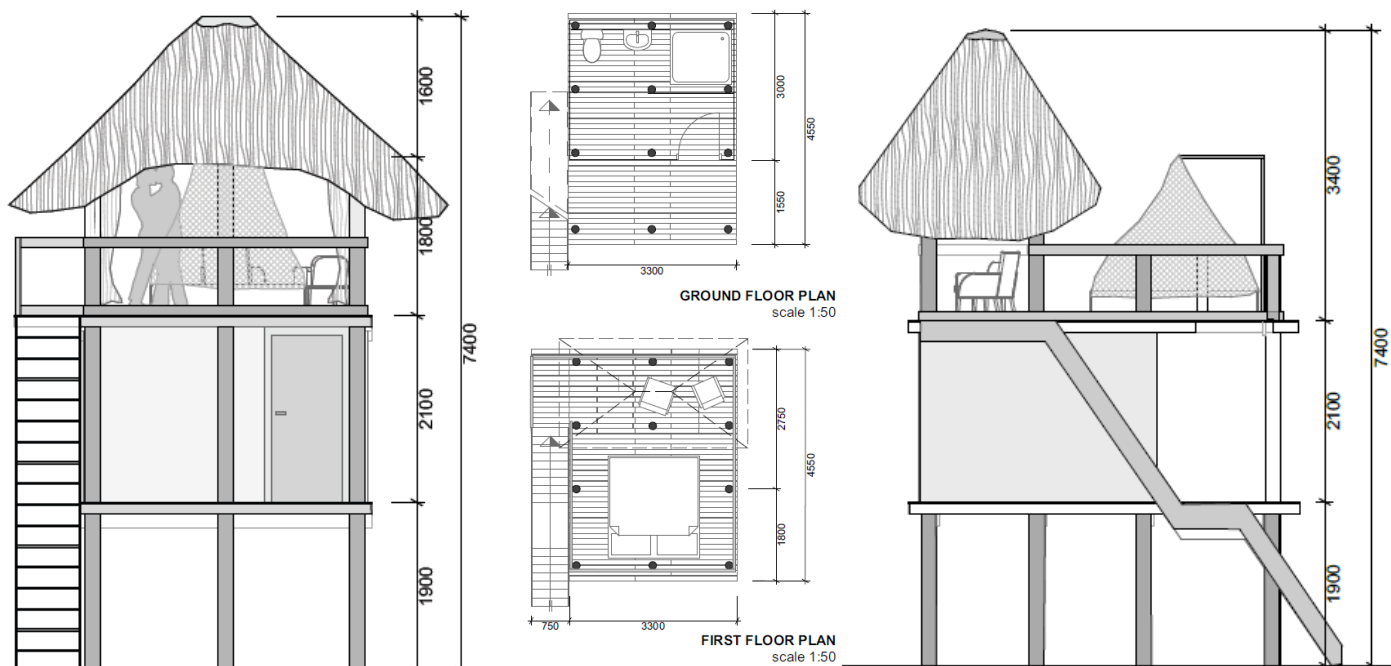
ELEPHANT SONG TRAIL



Once the track is picked up we will take you and show you the amazing tracking abilities of the Khwai Bushman. It's like watching a magic show. As you track the elephant the tracker and guide will guide you through the story of his movements and thinking. His behaviour patterns during the night. Maybe where he slept, or joined with others to forage, chased a lion or defended himself from those sturdy honey badgers. Rest periods will be taken in between to make sure everyone is comfortable. Once the old man has been spotted and the wind is right, the guide, and you will approach him cautiously. You will follow and observe him feeling his incredible power; he can only be described as a modern dinosaur. And at that lucky moment, you will hear the elephants' song as he sends his message out to others far away. You will be amongst these beautiful animals and come to realise that there is something very special being on foot with them, as well as highly exhilarating. Hopefully we will bump into other species along the way, Buffalo, kudu, giraffe roan and sable.



Your packed "Lunch" will be taken under a shady tree, along with a little rest. We then make our way in the direction of "The Platforms" These are three elevated platforms at a water hole. On arrival you will be met by our Hyena pan chef and waiter. Your bags that were outside your tent at Hyena pan will be waiting for you on the 5 meter elevated platform. A cold beer or refreshing beverage is recommended on the way to a shower. The showers & ablutions are private. Each Platform has en-suite. You can relax under the semi thatch roof of your Platform and photograph or just observe the wildlife at the waterhole. You can wonder over to the dining area where tea, coffee, cold drinks and snacks await.



Dinner is served under the stars around a crackling camp fire. Discussions are held about the days' events and what we learned and experienced. A talk by the guide will be given on the history of the elephant and their plight and positives of their future. We encourage guests to get involved in discussions if they so wish. That night the guide will brief you on the following days' activity.

www.hyenapan.com

Hyena Pan
TENTED CAMP

RESERVATIONS:

E: kelly@hyenapan.com
T: +267 71656455

MARKETING:

E: marketing@hyenapan.com
T: +27 82 9257486
Skype: [nadine9896](https://www.skype.com/people/nadine9896)

Hyena Pan

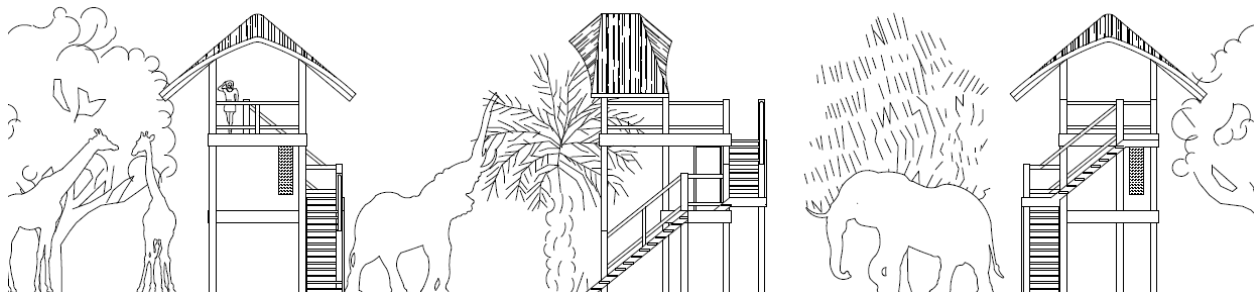
ELEPHANT SONG TRAIL

DAY 3

Early morning wake up. Coffee, tea and hot chocolate are on the table. Rusks and biscuits are the order of the early morning coffee ritual. Breakfast is cooked over the fire, bacon and eggs, sausages and fried tomato, yogurt, fruit and cereal. After packing your back pack again with energy bars, fruit and water and a sandwich we set out on the trail to look for another big old boy. We spend the morning out tracking and photographing the elephants and wildlife in this pristine area. The guide will radio for a pick up at the nearest point of exit on a road.

Return to the platforms for lunch and shower. That afternoon high tea and a short walk to an underground hide where you will view animals only a few meters away. You will be collected from the hide by vehicle and driven back to The Platforms.

End your evening with dinner under the stars and sleep out on your platform.



DAY 4

Early morning wake up. Coffee and breakfast as per previous day. Pack your bags and leave them at the foot of the bed, which will be taken back to Hyena Pan Tented Camp to await your arrival in the late afternoon. You will be driven down to the Khwai River approximately 45 minutes away through big game country. Take a short makoro ride over a gentle part of the river and spend the morning walking part of this beautiful river, islands and its flood plains, which borders the Moremi Game Reserve. The bird life is excellent here, lots of big game and the elusive leopard or even wild dogs are found in this particular part of Khwai. Hippo abound. Lunch on the side of the river or a table set up in the river with the water lapping around your ankles. A siesta and then an afternoon game drive along the river where your chances of seeing leopard and lion are high. A multitude of wild animals from zebra, impala, waterbuck and lechwe are seen along the river. This river has a very high average for seeing leopard.

That evening we return to Hyena Pan to one of Hyena Pans relaxing lounges, a pool and a bar stocked with the finest.

DAY 5

Departure from camp after breakfast will take a gentle drive to the airstrip for your onward journey.

Elephant song: (3 nights)

Start at Hyena Pan as previous itinerary, only one night on the platforms, on day three we move to the floodplains of the Khwai River and the island walk returning to Hyena Pan for the third night, departure after breakfast on day four.

www.hyenapan.com

Hyena Pan
TENTED CAMP

RESERVATIONS:

E: kelly@hyenapan.com
T: +267 71656455

MARKETING:

E: marketing@hyenapan.com
T: +27 82 9257486
Skype: nadine9896